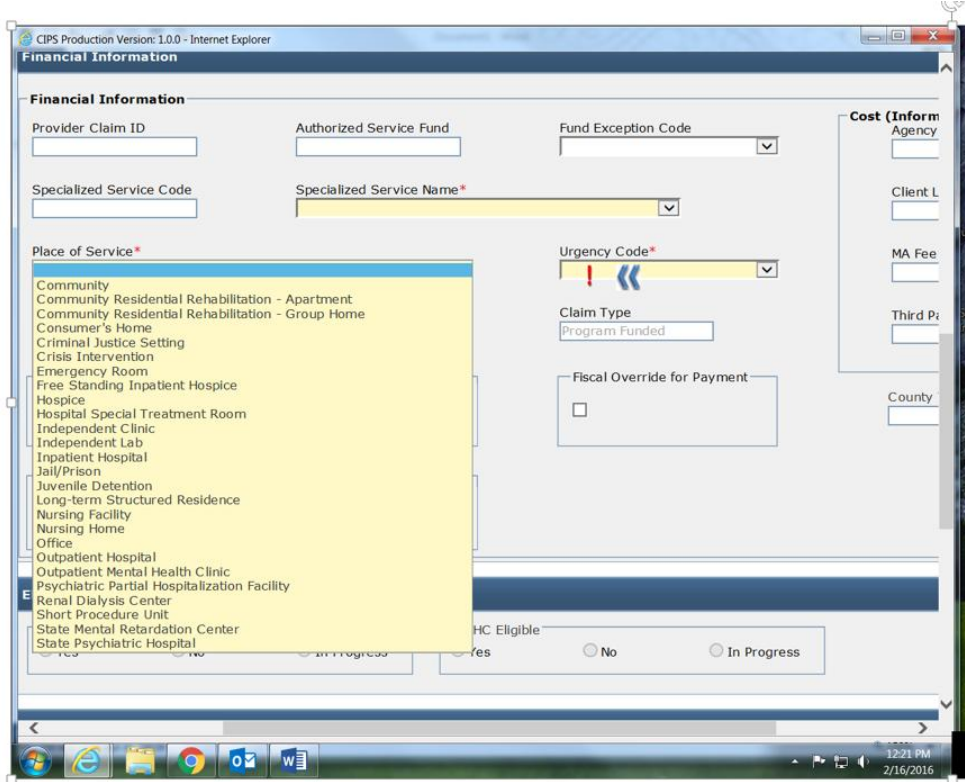


PLACE OF SERVICE CODES

On-line Services Rendered Screen.

The applicable place of service can be chosen from the dropdown list shown below.



Batch requires the appropriate code.

PL_SVC_ID (County Code)	PL_SVC_NAME
1	Office
2	Consumer's Home
3	Inpatient Hospital
4	Renal Dialysis Center
5	Outpatient Hospital
6	Independent Lab
7	Hospital Special Treatment Room
8	Nursing Facility
9	Independent Clinic
10	Psychiatric Partial Hospitalization Facility
11	Community
12	Short Procedure Unit
14	Emergency Room

15	State Mental Retardation Center
16	Free Standing Inpatient Hospice
17	Crisis Intervention
18	State Psychiatric Hospital
19	Community Residential Rehabilitation - Group Home
20	Community Residential Rehabilitation - Apartment
21	Long-term Structured Residence
22	Outpatient Mental Health Clinic
23	Criminal Justice Setting
24	Juvenile Detention
25	Jail/Prison
26	Nursing Home
27	Hospice
28	Telehealth